



## **ZOOM 6.4 - SETTING THE ZPU-5000 UNIT IN STANDALONE MODE (WITH ZAC 6.4 PLUGIN)**

### **PROCEDURE**

**P/N: 9483-25P1A-641**



## ZPU-5000 IN STANDALONE MODE (WITH ZAC 6.4 PLUGIN)



### Important information

Please note that the following applies expressly to ZOOM 6.4 with ZAC version 6.4 firmware.

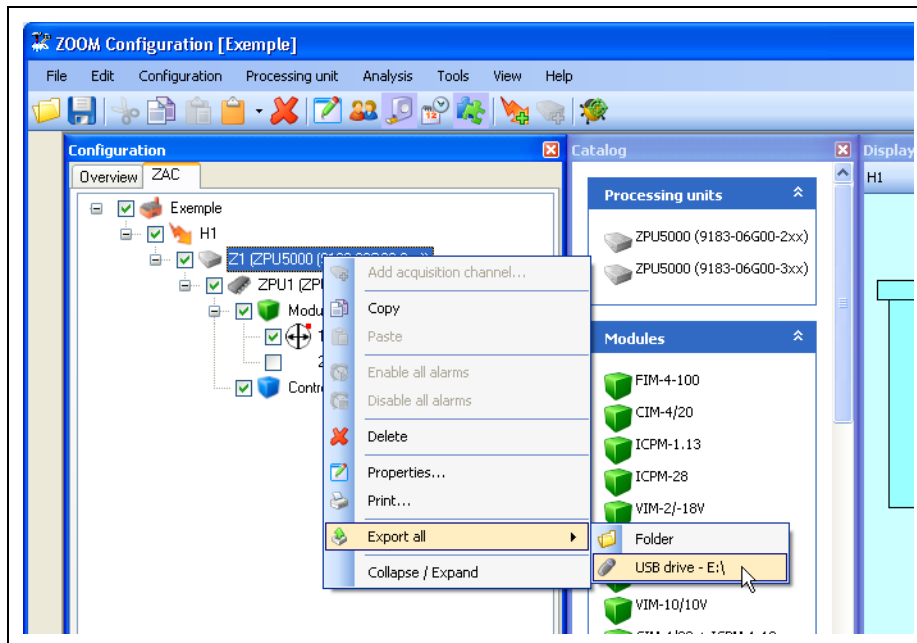
Setting a ZPU-5000 unit for operation in standalone mode is a three steps operation:

- Step 1 - The ZPU-5000 configuration file must be exported from the computer hosting the ZOOM software to a USB key.
- Step 2 - Next, the ZPU-5000 unit must be placed in Standalone mode.
- Step 3 - Finally, the ZPU configuration file previously saved on the USB key must be imported into the ZPU-5000 unit.

### Exporting a ZOOM configuration file to a USB key

- Open the ZOOM Configuration interface window, and open the configuration file you wish to export
- Select the ZAC tab in the Configuration panel
- Place a USB key in a USB port on the computer
- Right-click on the unit of which you want to export the configuration, and from the contextual menu, select **Export all - USB drive - E:\**

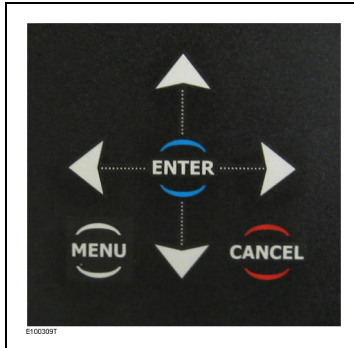
*In this example, E:\ is the drive letter assigned to the first available USB port. The drive letter may differ on your system.*



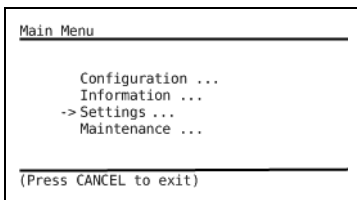
- Verify that the USB key now contains a file named as follows:  
**E:\Configurations\ZAC\Import\ZPU5000LocalConfig.XML**



## Placing a ZPU-5000 unit in Standalone Mode

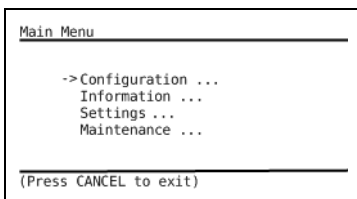


- Press Menu on the ZPU-5000 front panel keypad



- Select **Settings** and press ENTER
- Select **Set Mode** and press ENTER
- Select **Standalone, not connected to ZOOM** and press Enter
- Press Cancel twice to return to the main menu

## Importing a local configuration file



- Select **Configuration** and press ENTER
- Select **Import all Configurations...** and press ENTER
- Insert the USB key in the front panel USB port and press ENTER
- Messages will appear - wait for the message **Reboot is needed (menu Maintenance)** to appear, and then remove the USB key
- Press Cancel twice to return to the main menu
- Select **Maintenance** and press ENTER
- Select **Restart Unit...** and press ENTER
- When the ZPU-5000 unit has finished rebooting, verify in the upper left corner of the screen that the mode is now [Local], and that the configuration is present



