



ZOOM[®] Software Suite



Version 7.4

Installation Guide






Safety Symbols

	Caution - Identifies conditions or practices that could affect product performance or damage the equipment.
	Important Information - Must be read and followed.

Safety Precautions

 Important Information
<ul style="list-style-type: none">• The equipment may need to be accessed during the installation. Make sure all acquisition units are accessible before beginning the installation.

NOTICE: Trademarks referenced herein are trademarks and registered trademarks of VibroSystM Inc. or third parties, and are the property of their respective owners. Third party trademarks are used for identification purposes only and shall not be construed as indicative of any relationship or endorsement between VibroSystM Inc. and the third parties.

This manual is provided solely for guidance. VibrosystM Inc. takes no responsibility or liability for any damage caused by accidents, improper installation or misuse. Liability is limited to the repair and/or replacement of defective products.

VibroSystM Inc. 2727 Jacques-Cartier E. Blvd, Longueuil, QC, Canada J4N 1L7 | Phone: 450 646-2157 | U.S. Toll-free Line: 800 663-8379

email: service@vibrosystm.com | www.vibrosystm.com



TABLE OF CONTENTS

1. INTRODUCTION	5
2. MINIMUM SYSTEM REQUIREMENTS	5
2.1 For a server	5
2.2 For a workstation	6
3. SYSTEM OVERVIEW	6
3.1 The server	7
3.2 The workstation	7
4. UNINSTALLING AN EXISTING ZOOM VERSION	7
4.1 Database backup	8
4.1.1 Database backup with ZOOM version 7.1 or more recent	8
4.1.2 Database backup with ZOOM version 7.0 or older	8
4.2 Stopping the ZOOM software	8
4.3 Uninstalling the existing ZOOM version	9
5. INSTALLING THE ZOOM 7.4 SOFTWARE	9
5.1 Installation of Microsoft .NET Framework 3.5	9
5.1.1 With Windows Server 2008 or Windows 10	9
5.1.2 With Windows 8	9
5.1.3 With Windows Server 2012, Windows Server 2016, or Windows Server 2019	10
5.2 Installation of ZOOM software	15
6. ZOOM UPDATE ASSISTANT	17
6.1 Assisted database update and equipment update	17
6.2 No active or valid configuration found	20
7. MANUAL EQUIPMENT UPDATE	21
APPENDIX A: BACKUP PROCEDURE FOR MICROSOFT SQL SERVER	23
APPENDIX B: SPECIFIC LOCAL PORTS	25





1. INTRODUCTION

This manual provides information required to install your new software.

2. MINIMUM SYSTEM REQUIREMENTS

The following tables display the minimum system requirements for servers and workstations.

2.1 For a server

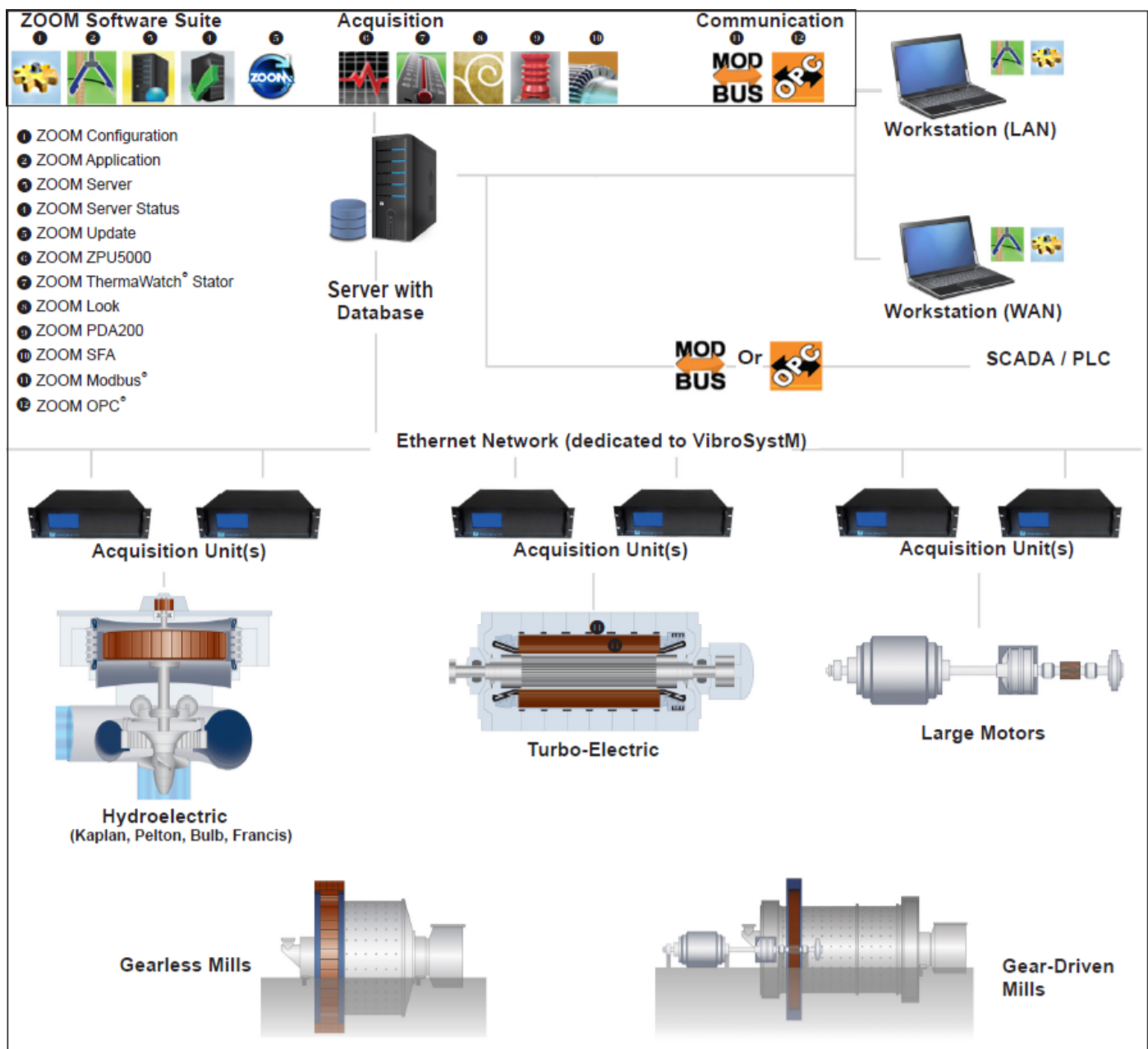
Operating System	Recommended Database Engine	Recommended Hardware
Windows Server 2008 R2	<ul style="list-style-type: none">• Microsoft SQL Server 2008 standard and R2• Also supported: SyBase 8	<ul style="list-style-type: none">• Server type computer• 2 GHz or faster, 64-bit, multi-core processor• Minimum 4 GB of system memory• DVD burner• Dual Ethernet network card for LAN/WAN settings• SVGA at 1280x1024, 32-bit color• 4 GB of free space on installation drive• Minimum 250 GB of free disk space for databases• 3 available USB ports
Windows Server 2012	<ul style="list-style-type: none">• Microsoft SQL Server 2008 standard and R2• Microsoft SQL Server 2012 standard• Microsoft SQL Server 2014• Also supported: SyBase 8	<ul style="list-style-type: none">• Server type computer• 3.1 GHz or faster, 64-bit, multi-core processor• Minimum 8 GB of system memory• DVD burner• Dual Ethernet network card for LAN/WAN settings• SVGA at 1280x1024, 32-bit color• 4 GB of free space on installation drive• Minimum 250 GB of free disk space for databases• 3 available USB ports
Windows Server 2016	<ul style="list-style-type: none">• Microsoft SQL Server 2014 standard• Microsoft SQL Server 2016 standard• Microsoft SQL Server 2017 standard• Microsoft SQL Server 2019 standard	<ul style="list-style-type: none">• Server type computer• 3.1 GHz or faster, 64-bit, multi-core processor• Minimum 8 GB of system memory• DVD burner• Dual Ethernet network card for LAN/WAN settings• SVGA at 1280x1024, 32-bit color• 4 GB of free space on installation drive• Minimum 250 GB of free disk space for databases• 3 available USB ports
Windows Server 2019	<ul style="list-style-type: none">• Microsoft SQL Server 2014 standard• Microsoft SQL Server 2016 standard• Microsoft SQL Server 2017 standard• Microsoft SQL Server 2019 standard	<ul style="list-style-type: none">• Server type computer• 3.1 GHz or faster, 64-bit, multi-core processor• Minimum 8 GB of system memory• DVD burner• Dual Ethernet network card for LAN/WAN settings• SVGA at 1280x1024, 32-bit color• 4 GB of free space on installation drive• Minimum 250 GB of free disk space for databases• 3 available USB ports



2.2 For a workstation

Operating System	Recommended Hardware
<ul style="list-style-type: none"> Windows 8 Windows 10 	<ul style="list-style-type: none"> 1 GHz or faster, multi-core processor Minimum 2 GB of system memory Ethernet network card CD or DVD drive SVGA at 1280x1024, 32-bit color Minimum 2 GB of free disk space on the installation drive

3. SYSTEM OVERVIEW





The ZOOM software can be installed on a server or workstations:

3.1 The server

The server is the computer on which is installed:

- ZOOM Server, the application in charge of data and communication management
- The database engine (SQL Server, Sybase).
- All data acquisition and communication gateway services

Other ZOOM software applications can also be installed on the server:

- ZOOM Configuration (equipment and sensor description, measurement configuration)
- ZOOM Application (take manual measurements, acknowledge alarms, display results, monitor equipment status, etc.).

3.2 The workstation

The workstation is a computer that connects to ZOOM Server via an Ethernet network, and on which is installed:

- ZOOM Configuration (equipment and sensor description, measurement configuration)
- ZOOM Application (take manual measurements, acknowledge alarms, display results, monitor equipment status, etc.).

4. UNINSTALLING AN EXISTING ZOOM VERSION

The ZOOM software does not automatically update to a newer version. When an earlier ZOOM version is already installed, three operations are required before installing the new ZOOM version:

- A backup of the database is recommended;
- All ZOOM services (including ZOOM Server) and user interface programs must be stopped;
- The existing ZOOM software must be uninstalled.

If this is a first-time installation, skip directly to section [5. INSTALLING THE ZOOM 7.4 SOFTWARE](#), on page 9.



Important Information

- You can use ZOOM 7.4 to import and update a database that was saved as a backup copy with ZOOM version 6 or later. Databases saved with an earlier version cannot be imported and require a conversion.
- A product key from an earlier ZOOM version can be used to install ZOOM version 7.4. The installation of ZOOM version 7.4 with a product key from an earlier version will provide all the improvements and fixes offered by the latest ZOOM software release. However, additional functionalities introduced with later versions will not be accessible.
- Holders of a product key for ZOOM version 7.2 or 7.3 can use their existing product key, while holders of a product key for ZOOM version 7.1 or earlier must obtain a special product key (contact VibroSystM).



4.1 Database backup

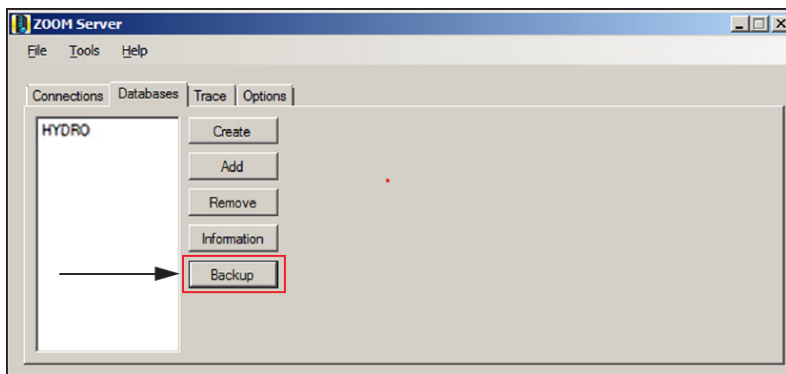
Before uninstalling an existing software version, making a backup copy of the database is recommended.

For ZOOM 6 and more recent, a backup can be done now, or ZOOM Setup will do it for you later (see section [6. ZOOM UPDATE ASSISTANT](#), on page 17).

The procedure to create a backup of the database depends on which ZOOM version is used:

- ZOOM version 7.1 or more recent.
- ZOOM version 7.0 or older.

4.1.1 Database backup with ZOOM version 7.1 or more recent



1. Use ZOOM Server to make a backup of the database(s). Open the **Database** tab, select a database, and click on **Backup**.

A wizard will open and guide you through the backup procedure. For further details, please refer to the ZOOM software's **Online Help** (F1).

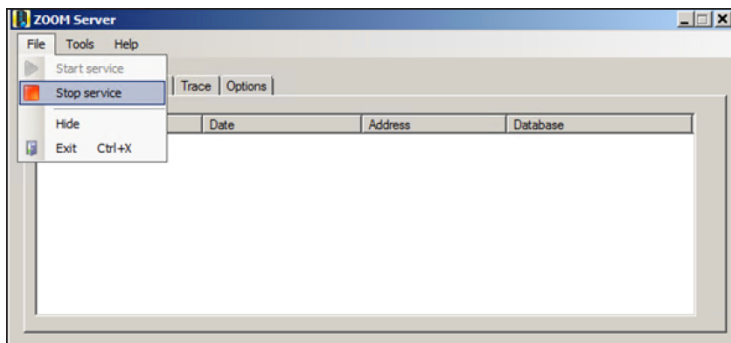
4.1.2 Database backup with ZOOM version 7.0 or older

With ZOOM version 7.0 or older, backup of the database is a manual operation.

- For Sybase databases, simply copy the .DB and .LOG files.
- For Microsoft SQL Server databases, refer to Appendix A or contact your database administrator.
- For Oracle® databases, refer to your Oracle administrator for assistance.

4.2 Stopping the ZOOM software

You can stop each running ZOOM service through the corresponding ZOOM service GUI (graphic user interface), or you can use Windows **Task Manager** to end tasks.



1. To stop a ZOOM service, open the corresponding GUI, and select **File > Stop service**
2. To close the GUI, select **File > Exit**.



Important Information

- Clicking on the **X** button will only close the GUI. The service will still be running in the background.



4.3 Uninstalling the existing ZOOM version

- Uninstall the existing ZOOM software from Windows **Control Panel**.
- If the existing ZOOM version is 6.2 or 6.4, uninstall **Crystal Report for .NET Framework 2.0 (x86)**.

5. INSTALLING THE ZOOM 7.4 SOFTWARE

Before installing the ZOOM software, Microsoft **.NET Framework 3.5** must be installed. This applies to both the server and workstation.

5.1 Installation of Microsoft .NET Framework 3.5

If ZOOM version 7.0 or more recent has previously been installed, then Microsoft **.NET Framework 3.5** is already installed, and you can skip directly to section [5.2 Installation of ZOOM software](#), on page 15.

If this is a first-time installation of the ZOOM software, depending on the Windows version used, installation of Microsoft .NET Framework 3.5 is either automatic, or requires user intervention.

5.1.1 With Windows Server 2008 or Windows 10

.NET Framework 3.5 is automatically installed during the installation of the ZOOM software. A valid internet connection is necessary to install .NET Framework 3.5 on Windows 10. Contact your network administrator for assistance if needed. You may proceed to section [5.2 Installation of ZOOM software](#), on page 15.

5.1.2 With Windows 8

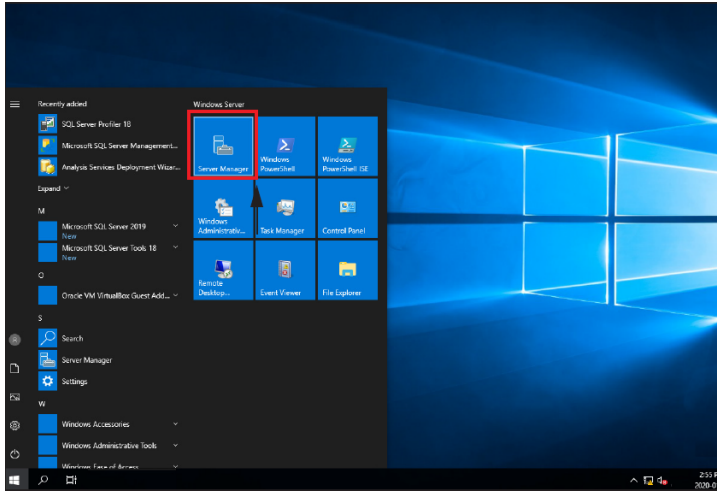
A valid internet connection is necessary to install .NET Framework 3.5 on Windows 8. Contact your network administrator for assistance if needed. To install .NET Framework 3.5, complete the following procedure:

- Press the **Windows** key to open the Start screen.
- Right-click on the background, select **All apps**, then **Control Panel**.
- Select **Programs and Features** followed by **Turn Windows features on or off**.
- In the **Windows Features** window, select **.NET Framework 3.5 (includes .NET 2.0 and 3.0)** and click on **OK**. Windows will then proceed with the download and installation process.

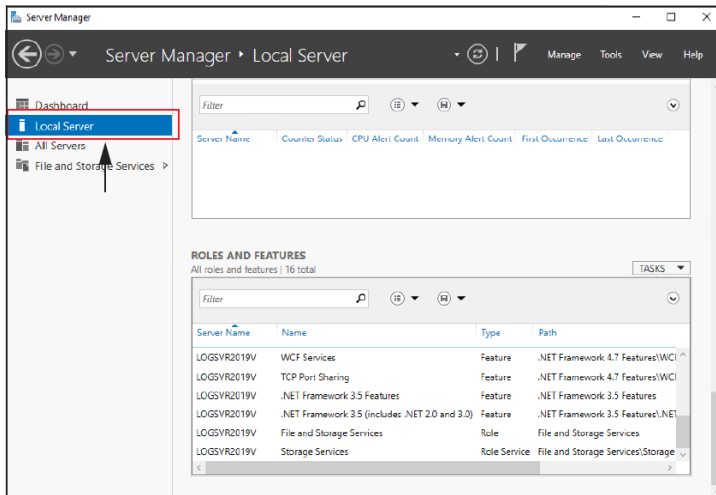


5.1.3 With Windows Server 2012, Windows Server 2016, or Windows Server 2019

.NET Framework 3.5 must be installed as a feature. The Windows Server installation disc is necessary to complete the following procedure:



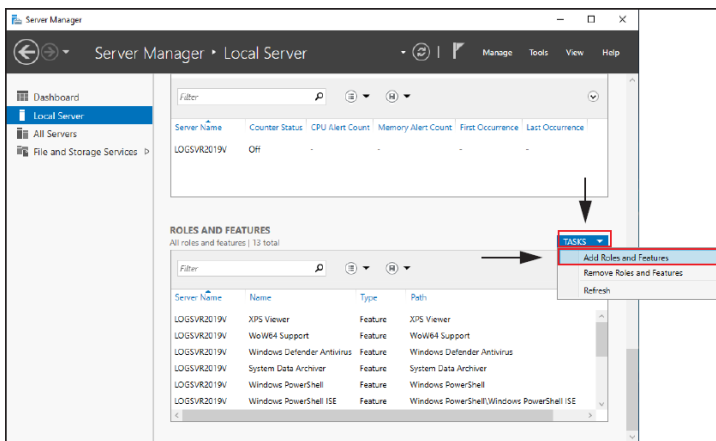
1. Open the Server Manager.



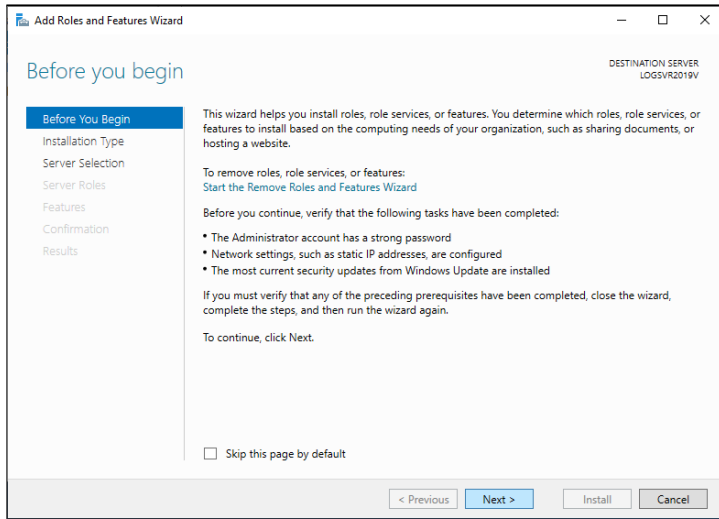
2. In the Server Manager window, select the Local Server tab on the left.

In the **ROLES AND FEATURES** section, verify if .NET Framework 3.5 is installed.

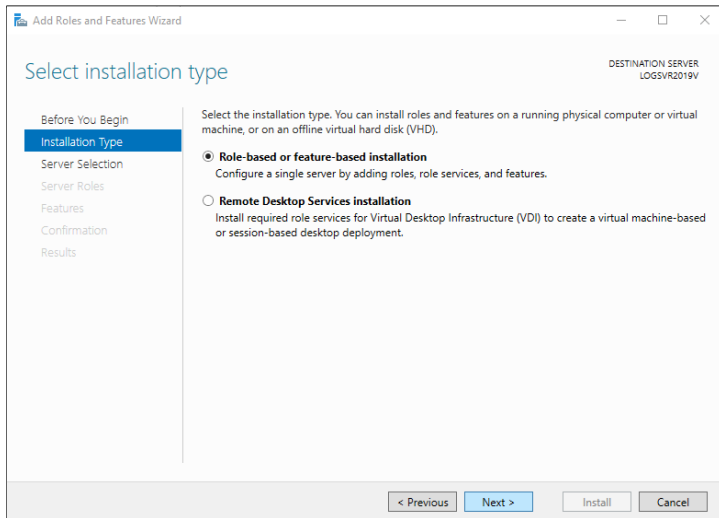
If .NET Framework 3.5 is installed, go to section [5.2 Installation of ZOOM software](#), on page 15.



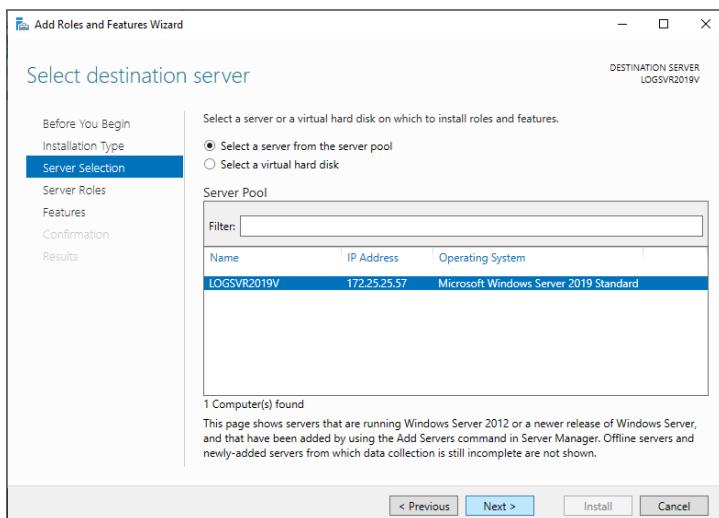
3. If .NET Framework 3.5 is not installed, click on the **TASKS** drop-down list, and select **Add Roles and Features**.



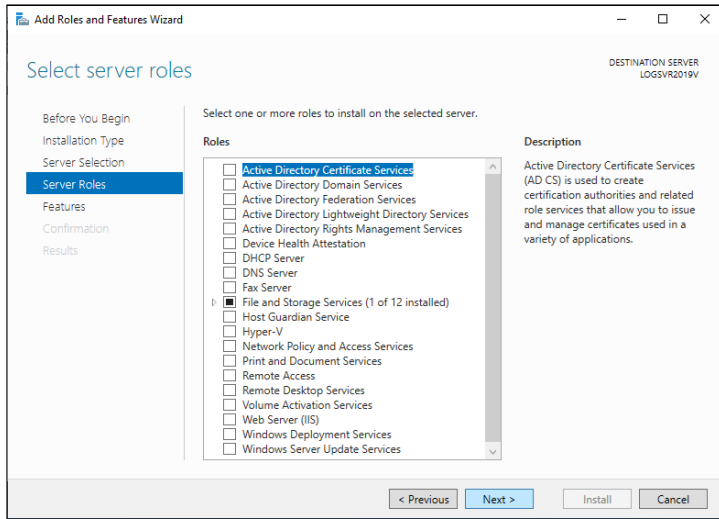
4. If the **Before you begin** window is displayed, click on **Next**.



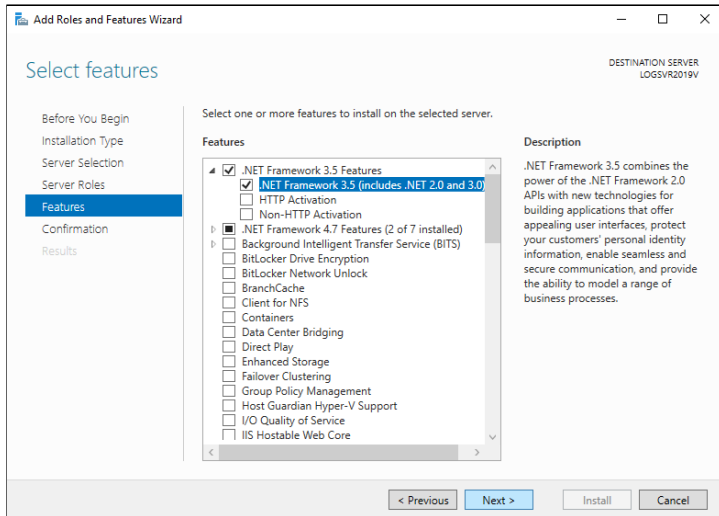
5. Next, in the **Installation Type** window, select the **Role-based or feature-based installation** option, and click on **Next**.



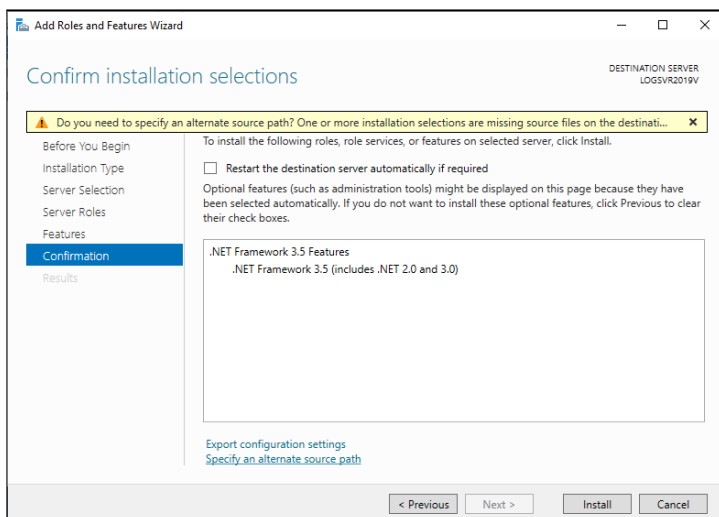
6. In the **Select destination server** window, choose **Select a server from the server pool**. In the Server Pool list, select the server for which the roles and features must be installed, and click on **Next**.



7. In the **Select server roles** window, click on **Next**.

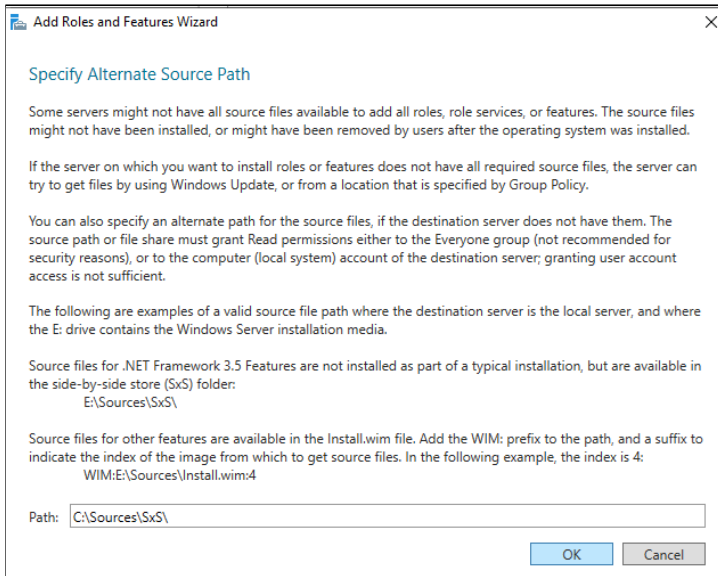


8. In the **Select features** window, select **.NET Framework 3.5 (includes .NET 2.0 and 3.0)**, and click on **Next**.

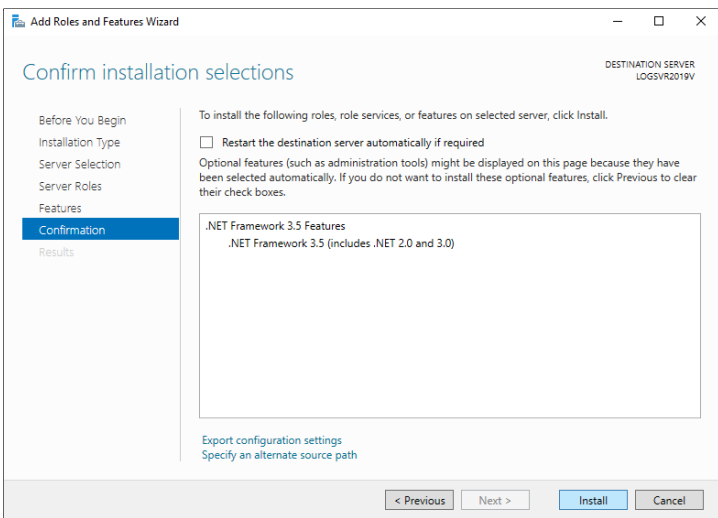


9. In the **Confirmation** window, click on **Specify an alternate source path**.

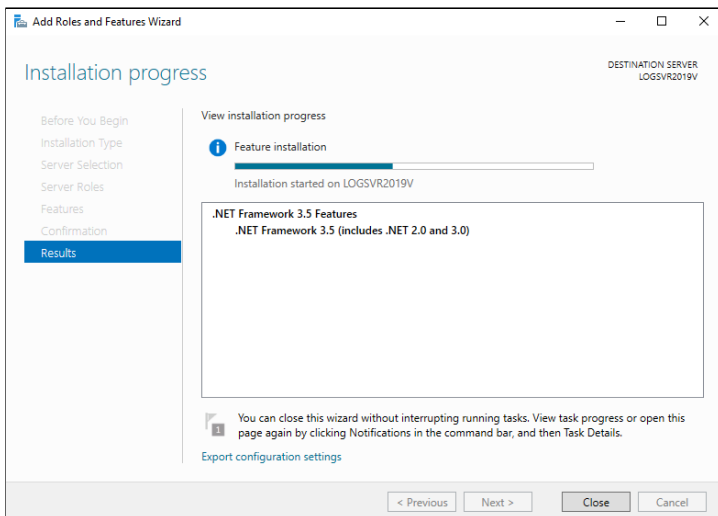
If the computer has an internet connection, skip to Step 12.



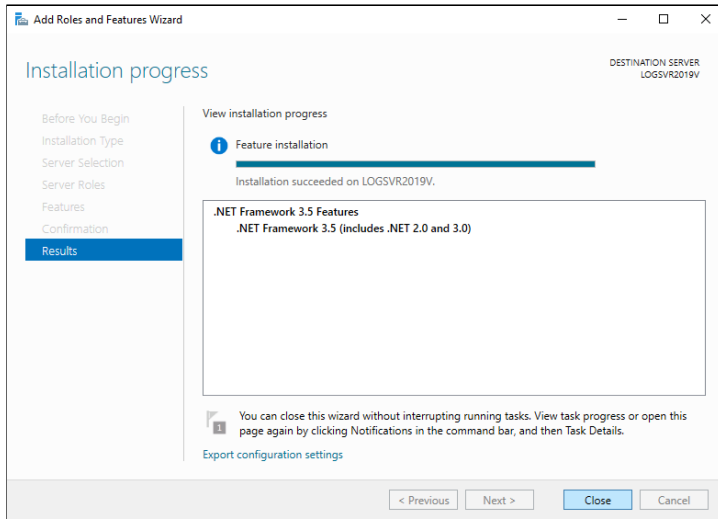
10. In the **Path** field, type the folder path: **D:\Sources\SxS** (change **D** for the drive letter of the drive in which the Windows Server installation disc is placed), and click on **OK**.



11. Click on **Install** to complete the installation process.



12. An Installation progress window is displayed. Wait for the final message.



13. When the final message is displayed, click on **Close**.



5.2 Installation of ZOOM software

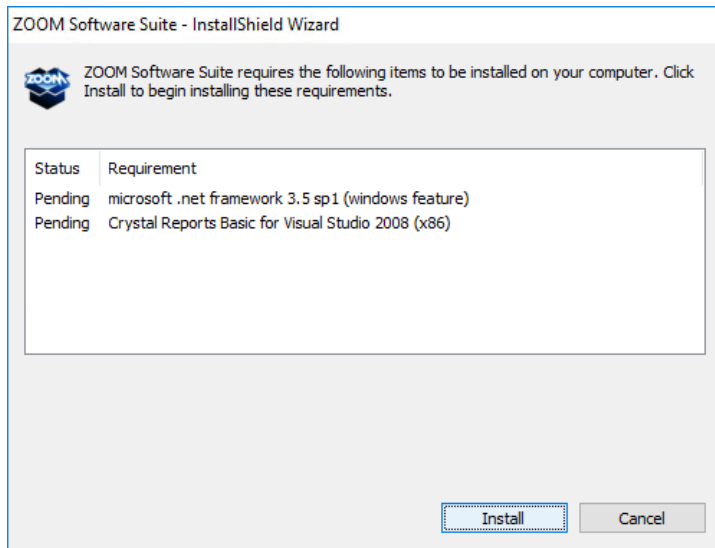
After any previous version of the ZOOM software has been deleted and Microsoft .NET Framework 3.5 has been set up if needed, you can now install the ZOOM software.

! Important Information

- As the installation moves along, you can click on **Back** to return to a previous screen, or click on **Cancel** to stop and exit the installation.

This procedure applies to installation on the server as well as on workstations.

- Click on the downloaded ZOOM executable file, or insert the installation disc into the tray, and an installation wizard should launch automatically.
If the installation wizard does not launch automatically, browse the installation disc, and manually launch **ZOOM_Setup.exe** from the ZOOM Suite directory.
Select the desired language and click on **OK**.

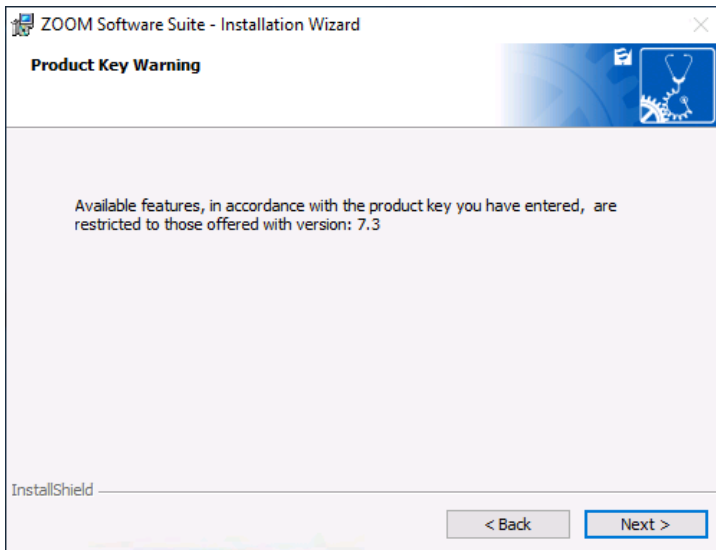


- When installing on a computer operating with Windows Server 2008 or Windows 10, a window prompts for Crystal Reports Basic and/or Microsoft .NET Framework 3.5 items to be installed. Click on **Install**.

- The InstallShield Wizard will prompt the beginning of the installation process, click on **Next** to continue.
- Make sure to read the license agreement. Click on **Next** to confirm you have read and accepted the conditions.
- Enter a project and company name, followed by the 36-character product key which was either sent by email or located at the back of the CD packaging. Once the product key is entered, click on **Next**.

! Important Information

- If a product key for a version prior to 7.4 is used, a warning will be displayed to inform you that some features introduced with a later version will not be available.



If you see this message but you have purchased a ZOOM 7.4 product key, click on **Back**, and enter your ZOOM 7.4 product key. Else, click on **Next** to install a limited version without the new features of ZOOM 7.4.

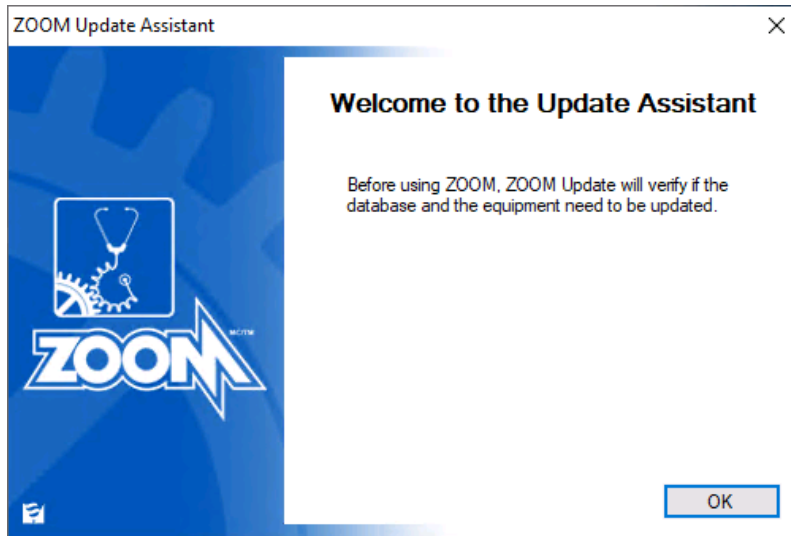
6. A destination folder is proposed by default. Click on **Next** to accept this choice or **Change...** to select a different destination folder.
7. At the **Installation Type** window, select the appropriate choice:
 - For a server: select **Server**.
 - For a workstation: select **Workstation**.Once the selection is completed, click on **Next** to continue.
8. At the Setup Type window, select the appropriate choice:
 - **Recommended**: Installs, by default, all purchased components.
 - **Custom for advanced users**: Allows the user to specify, among purchased components, which ones to install. Click on **Next**, and select the components to be installed.Once the selection is completed, click on **Next** to continue.
9. The ZOOM software is now ready to be installed. Click on **Install** to proceed. This may take several minutes.
10. Congratulations, the ZOOM software is now installed. Click on **Finish** to close the InstallShield Wizard.
11. A series of icons have been installed on the desktop. Each icon represents one of ZOOM's software applications or services.
 - **For Workstation**: The installation is now completed.
 - **For Server**: Continue to section [6. ZOOM UPDATE ASSISTANT](#), on page 17.



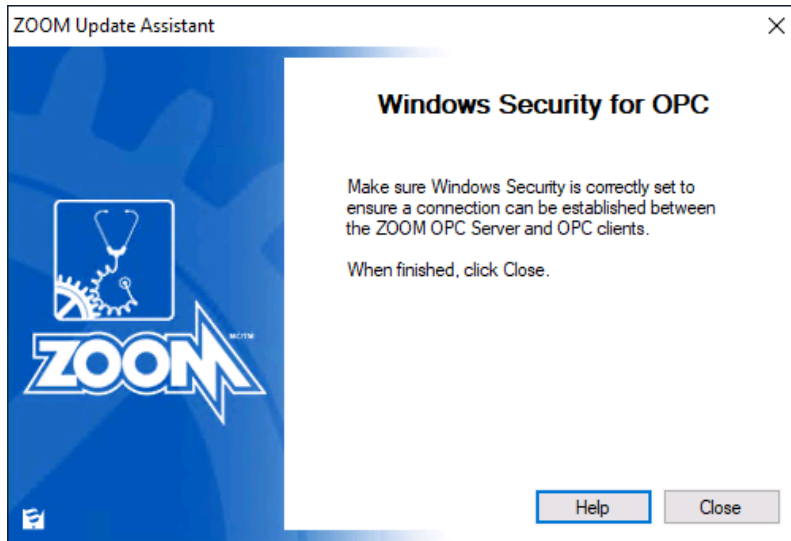
6. ZOOM UPDATE ASSISTANT

Once the ZOOM software installation is completed, the **ZOOM Update Assistant** launches automatically.

6.1 Assisted database update and equipment update

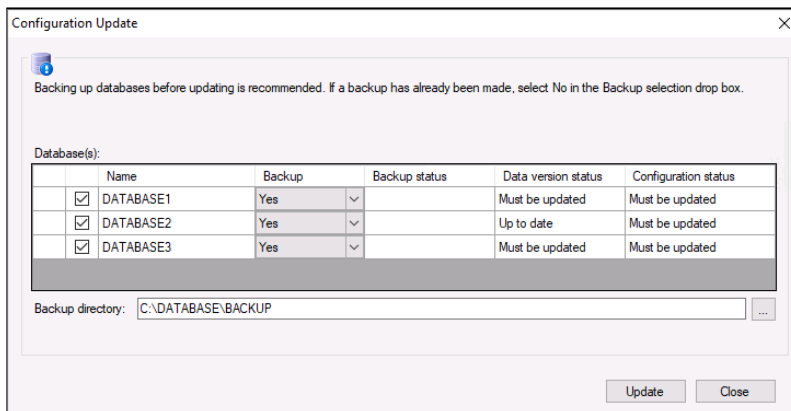


1. The ZOOM Update Assistant starts with an opening message. Click on **OK** to begin the update process.



2. If the OPC communication gateway module is installed, the Windows Security for OPC window is displayed. You must verify Windows security and adjust settings if needed. For further details, refer to the ZOOM software Online Help (F1). Once Windows security configuration is completed, click on **Close**.

Note: If the OPC communication gateway module is not installed, this window is not displayed, and the ZOOM Update assistant skips directly to Step 3.



3. The Configuration Update window displays databases connected to ZOOM Server.
Note: If this is a first time installation or if your previous database is older than ZOOM 6, this window is not displayed. Go to section [6.2 No active or valid configuration found](#), on page 20.

Databases that require an update are automatically selected (black check mark in the first column).



ZOOM Update will backup the databases with the **Yes** option selected in the Backup column. If the backup has already been made or if a backup is not necessary, set the backup option to **No** for the corresponding database.

When selection of the backup option for each database is complete, select a valid database directory, and click on **Update** to proceed.

Configuration Update

An update is in progress. Please wait.

Database(s):

	Name	Backup	Backup status	Data version status	Configuration status
<input checked="" type="checkbox"/>	DATABASE1	Yes	Succeeded	Up to date	Must be updated
<input checked="" type="checkbox"/>	DATABASE2	Yes	Succeeded	Up to date	Must be updated
<input checked="" type="checkbox"/>	DATABASE3	Yes	Succeeded	In progress...	Must be updated

Backup directory: C:\DATABASE\BACKUP

00:05:14

Update Cancel

4. The backup and update of the databases according to the selected options may take several minutes. A timer and progress bar show the progression.

Configuration Update

All configurations are up to date.

Database(s):

	Name	Backup	Backup status	Data version status	Configuration status
<input checked="" type="checkbox"/>	DATABASE1	Yes		Up to date	Up to date
<input checked="" type="checkbox"/>	DATABASE2	Yes		Up to date	Up to date
<input checked="" type="checkbox"/>	DATABASE3	Yes		Up to date	Up to date

Backup directory: C:\DATABASE\BACKUP

Update Close

5. After the backup and update of a database is completed, a green check mark appears on the left to confirm that the operation was successful. When the backup and update procedure is completed for all databases, click on **Close**.

Equipment Update

Some equipments are not up to date or can't be verified.

Please note that even if you choose remote updating, you may have to access the equipment to manually restart it.

Please note that the protection will be deactivated during the update and that it can take up to 30 minutes.

Configuration	Unit	Equipment	Status	Update
<input checked="" type="checkbox"/> HYDRO	UNIT 1	A1	Versions are not up to date.	Remotely By USB key
<input checked="" type="checkbox"/> HYDRO	UNIT 1	A2	Versions are not up to date.	Remotely By USB key
<input checked="" type="checkbox"/> HYDRO	UNIT 2	B1	Versions are not up to date.	Remotely By USB key
<input checked="" type="checkbox"/> HYDRO	UNIT 2	B2	Versions are not up to date.	Remotely By USB key
<input checked="" type="checkbox"/> HYDRO	UNIT 3	C1	Versions are not up to date.	Remotely By USB key
<input checked="" type="checkbox"/> HYDRO	UNIT 3	C2	Versions are not up to date.	Remotely By USB key
<input checked="" type="checkbox"/> HYDRO	UNIT 4	D1	Versions are not up to date.	Remotely By USB key
<input checked="" type="checkbox"/> HYDRO	UNIT 4	D2	Versions are not up to date.	Remotely By USB key

Custom USB key

Update all Close

6. The ZOOM Update assistant then proceeds with Equipment Update, verifying that the acquisition units are up to date.

At this step, if some equipment is not up to date, the user can choose between various update methods.

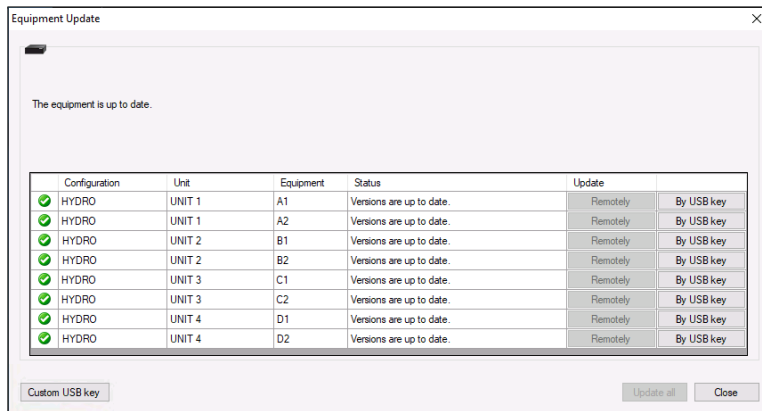


Caution

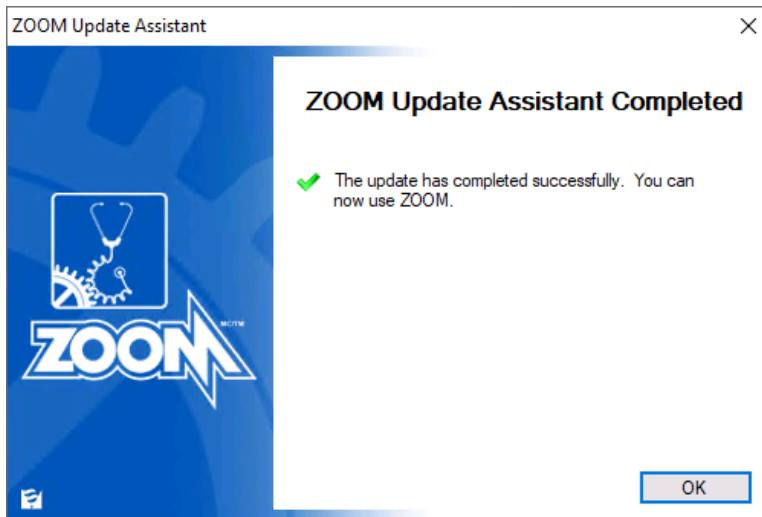
- DO NOT turn off or disconnect the equipment during the update process. This could permanently damage the equipment.
- Unit protection will be temporarily disabled during the update process.
- If the equipment is at version 7.1 or earlier, it can ONLY be manually updated by USB key.

Available update methods:

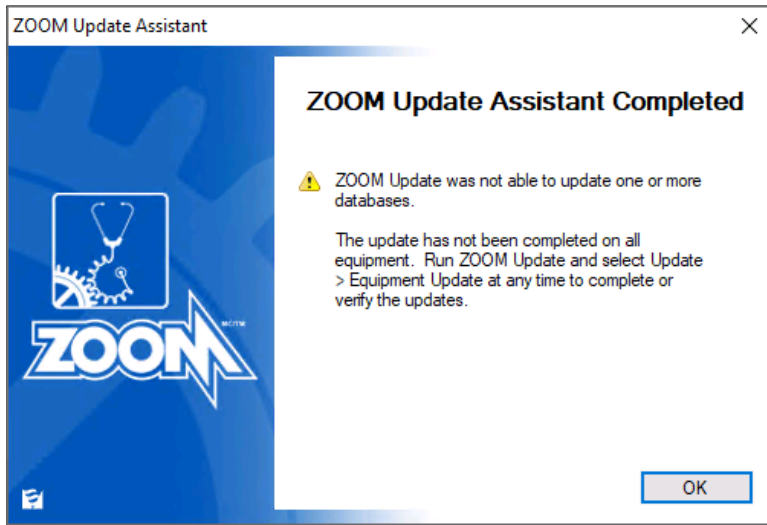
- To remotely update a specific piece of connected equipment, click on the corresponding **Remotely** button.
- To remotely update all the pieces of connected equipment, click on the **Update all** button, in the bottom right corner. The update may take up to 30 minutes.
- To manually update a specific piece of equipment by means of a USB key, click on the corresponding **By USB key** button. If you choose this method, refer to section [7. MANUAL EQUIPMENT UPDATE](#), on page 21.
- The Custom USB key button is reserved for advanced users only. For further details, refer to the ZOOM software Online Help (F1).



7. After the update of an equipment by one of the methods listed above, a green check mark appears on the left to confirm that the operation was successful. When the update procedure is completed for all equipment, click on **Close**.



8. If all databases and equipment are up to date, the ZOOM Update assistant displays a confirmation window with a green check mark, indicating that the system is ready to use. Click on **OK** to exit the ZOOM Update Assistant program, and exit the ZOOM Update window.



If a database or piece of equipment has not been correctly updated, the ZOOM Update assistant displays a confirmation window with a warning. Click on **OK** to exit the ZOOM Update Assistant program.

You can run the ZOOM Update program to access the user interface, and select either **Update configurations** or **Update equipment**.

6.2 No active or valid configuration found

On a first-time installation, or if the previous database is older than ZOOM 6, the ZOOM Update assistant starts with an **Equipment Update** window announcing: **No active or valid configuration found**.



- Click on **Close** in all the next windows, and then exit ZOOM Update. This will then terminate the update process.
- Follow the instructions to create a database and configuration. Refer to the ZOOM software Online Help (F1) for more information.



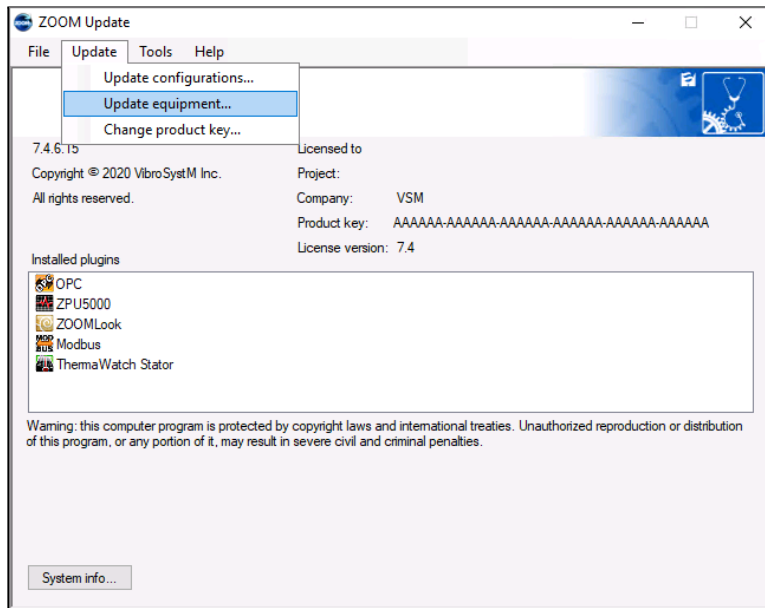
7. MANUAL EQUIPMENT UPDATE

This procedure is required when updating the equipment of a system operating with ZOOM version 7.1 or earlier, or if you wish to update the equipment manually. This procedure must be applied to ZPU™-5000, SFA-200™, and PDA-200™ acquisition units, and requires the insertion of a USB key in the server station.

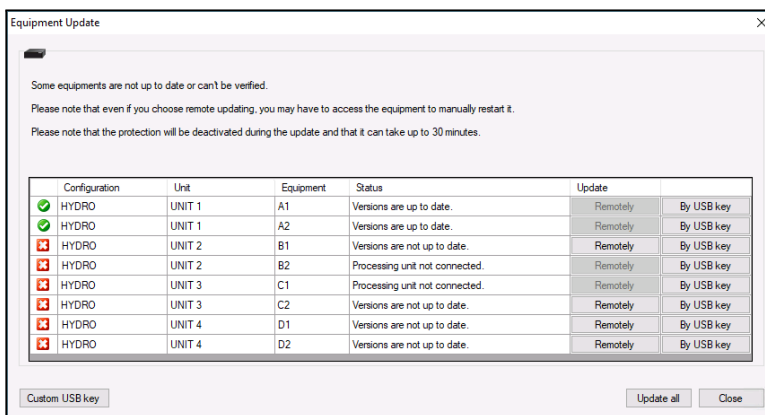
! Important Information

- A USB key must be inserted into the server's USB port before beginning the update.
- If several equipment components need to be updated, ZOOM Update will not copy all files at once on the same USB key. Each update must be done individually.

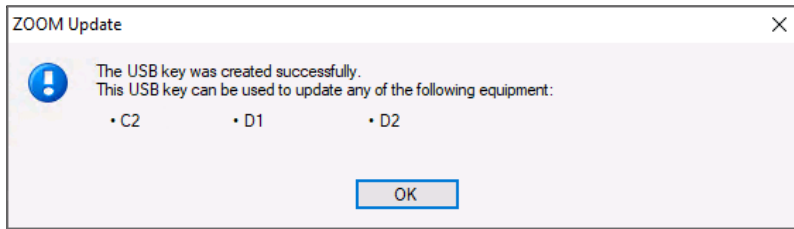
The procedure for manually updating the equipment is as follows:



1. Place a USB key in a USB port of the server station, click on the **ZOOM Update icon** to display the ZOOM Update user interface, and select **Update > Update equipment**.



2. In the Equipment Update window, all the acquisition units that are part of a valid configuration are listed with their status. Select a piece of equipment that you want to manually update, and click on the corresponding **By USB key** button in the right column.



3. ZOOM Update copies the necessary firmware on the USB key, and once the copy is completed, a message window is displayed to confirm on which acquisition unit(s) the USB key can be used. Click on **OK** to continue.

4. Remove the USB key from the server station.

5. Insert the USB key in the dedicated USB port of the acquisition unit on which the updated firmware must be applied. The **System OK** LED on the front panel of the acquisition unit will flash yellow as the firmware is copied.

6. Remove the USB key after the **System OK** LED has stopped flashing. The unit will automatically reboot.

Note that on ZPU-5000 acquisition units, depending on the number of modules requiring a firmware update, the equipment update process may take up to 30 minutes to complete.

7. If the USB key applies to more than one acquisition unit (see Step 3), repeat Steps 5 and 6 for each applicable acquisition unit.

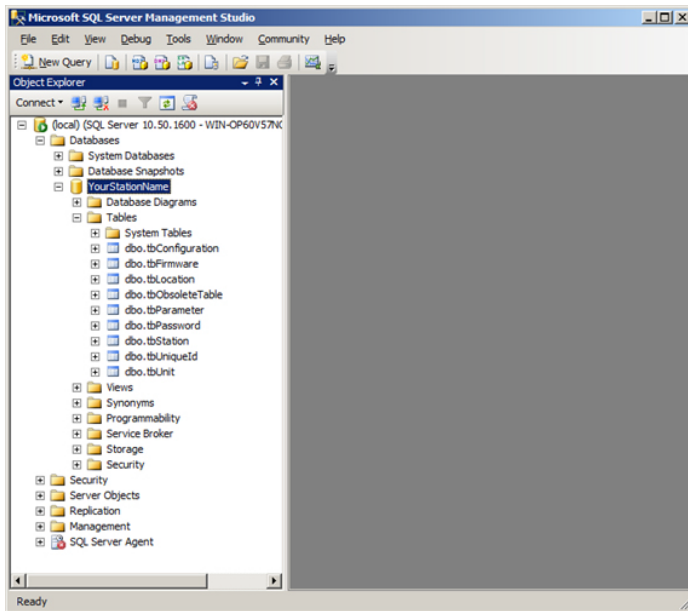
8. Return to the **Equipment Update** window, and repeat Steps 2 to 7 for each piece of equipment that you need to update manually.

This completes the manual update process.

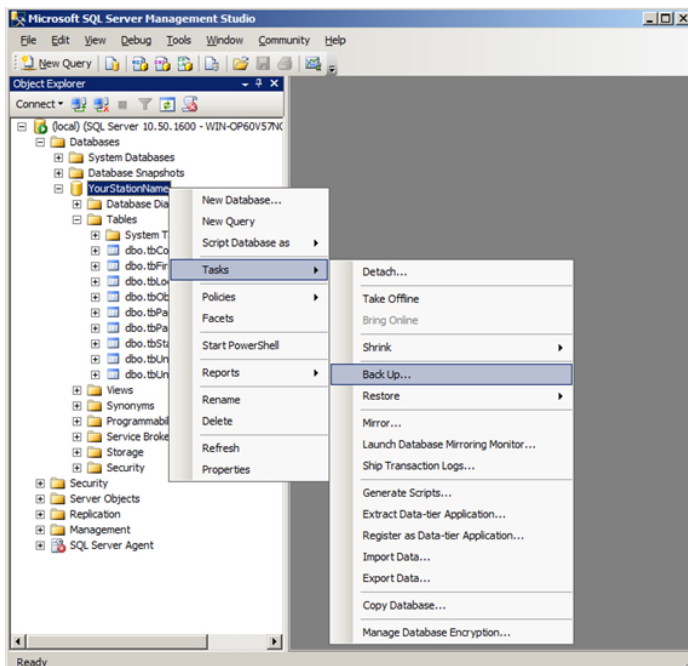


APPENDIX A: BACKUP PROCEDURE FOR MICROSOFT SQL SERVER

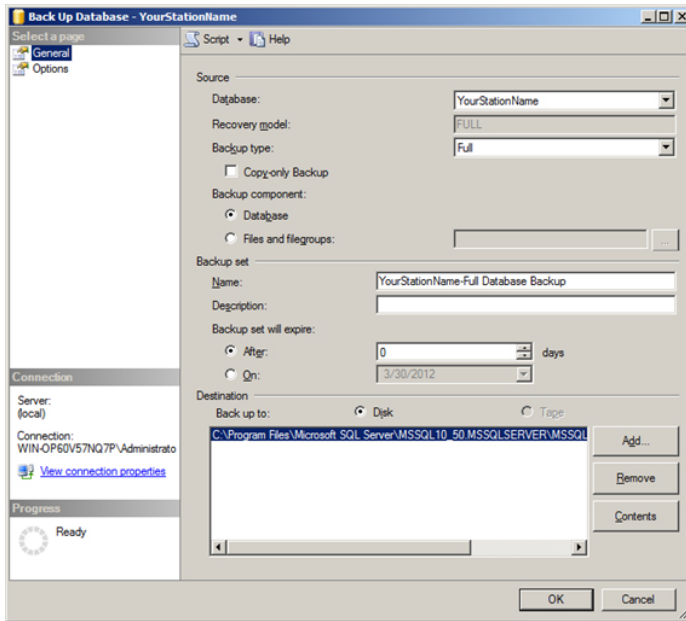
1. Open SQL Server Management Studio.
2. When the application starts, a connection is required:
 - **Server Type:** Database Engine
 - **Server Name:** (local)
 - **Authentication:** Windows Authentication



3. Expand the Databases node to see the existing databases created with ZOOM Server.



4. To back up a database, right-click on the name of the desired database in the left column. Then, select **Tasks > Back Up...**



5. In the **Back Up Database** window, look at the destination path to know where the backup file will be copied. When ready, click on **OK**. When the operation has completed, look for the backup file in the destination folder.

This completes the backup procedure for SQL Server.



APPENDIX B: SPECIFIC LOCAL PORTS

The ZOOM setup program automatically assigns a port number to each ZOOM service to allow inbound and outbound communication. The following tables list these assigned port numbers, and suggest names to be used for each port when setting up Windows Firewall.

Table 1: Inbound TCP Rules

Software	Port number	Suggested Name
ZOOM Look	62003	ZOOM Look Port
ZOOM Modbus	62013	ZOOM Modbus Port
ZOOM OPC	135	DCOM
ZOOM PDA200	62017	ZOOM PDA200 Port
ZOOM Server	62000	ZOOM Server Port
ZOOM SFA	62021	ZOOM SFA Port
ZOOM ThermaWatch Stator	62009	ZOOM ThermaWatch Stator Port
ZOOM ZPU5000	62011	ZOOM ZPU5000 Port

Table 2: Inbound UDP Rules

Software	Port number	Suggested Name
ZOOM Look	62002	ZOOM Look UDP In
ZOOM Modbus	62012	ZOOM Modbus UDP In
ZOOM PDA200	62016	ZOOM PDA200 UDP In
ZOOM Server	62001	ZOOM Server UDP In
ZOOM SFA	62020	ZOOM SFA UDP In
ZOOM ThermaWatch Stator	62008	ZOOM ThermaWatch Stator UDP In
ZOOM ZPU5000	62010	ZOOM ZPU5000 UDP In

Table 3: Outbound UDP Rules

Software	Port number	Suggested Name
ZOOM Look	62002	ZOOM Look UDP Out
ZOOM Modbus	62012	ZOOM Modbus UDP Out
ZOOM PDA200	62016	ZOOM PDA200 UDP Out
ZOOM Server	63000	ZOOM Server UDP Out
ZOOM SFA	62020	ZOOM SFA UDP Out
ZOOM ThermaWatch Stator	62008	ZOOM ThermaWatch Stator UDP Out
ZOOM ZPU5000	62010	ZOOM ZPU5000 UDP Out